

## Accessibility Information – Accessible Queen Studio (Last updated May 2026)

### Lazy Lizard Motor Inn – Port Douglas

Lazy Lizard Motor Inn offers a ground-floor Accessible Queen Studio designed to provide practical and comfortable accommodation for guests with accessibility requirements.

As every guest's needs are different, we encourage guests to contact us directly prior to booking to discuss individual requirements and determine whether the room and facilities are suitable for their needs.

The following information is provided to assist guests in making informed travel decisions and understanding the accessibility features available throughout the property.

---

#### Property Details

##### Lazy Lizard Motor Inn

121 Davidson Street

Port Douglas QLD 4877 Australia

+61 7 4099 5900

[info@lazylizardinn.com.au](mailto:info@lazylizardinn.com.au)

[www.lazylizardinn.com.au](http://www.lazylizardinn.com.au)

Owners / Managers:

Aidan Mulcahy & Alex Scott

---

#### Reception & Public Areas

Reception access is via a small ramp approximately 120mm high.

The main reception desk does not have a lowered section; however, a lower desk is available within reception for guest use if required.

There is good access throughout most public areas of the property, including pathways and the BBQ area.

The swimming pool is accessed via steps with a handrail. The pool does not currently have a ramp or pool chair lift and may not be suitable for all guests with mobility requirements.

---

#### Reception access ramp



#### Accessible room



#### Parking

Dedicated undercover parking is located directly outside the Accessible Queen Studio and is reserved specifically for guests staying in this room.

The parking area provides convenient access to the room entrance.

#### Dedicated undercover parking



#### Accessible Queen Studio

The Accessible Queen Studio is located on the ground floor.

Access to the patio is via a pathway with a small removable ramp in place.

---

Entry to the room is through an easy-to-open sliding door which is level with the floor. The sliding doorway opening width is approximately 1135mm.

Room furniture can be adjusted or repositioned where practical to assist guest access and movement requirements.

The studio includes:

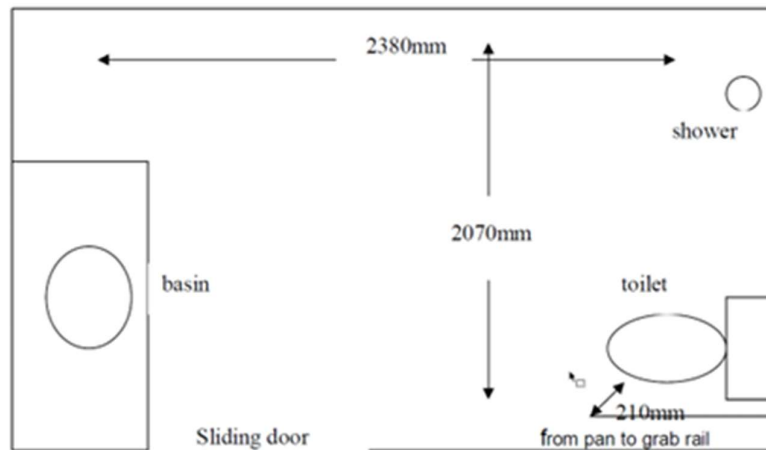
- One queen bed
- One single bed
- Kitchenette facilities
- Private bathroom
- Outdoor patio area

The widest clearance beside the queen bed is approximately 760mm. Beds may be repositioned to allow additional room if required.

Bed measurements:

- Height to top of mattress: approximately 560mm
- Under-bed clearance: approximately 120mm

### Bathroom Floor Plan (Approximate Measurements)



FLOOR PLAN

---

### Kitchenette & Living Area

A small kitchenette is provided for guest convenience.

The kitchenette includes:

- Sink
- Microwave
- Refrigerator
- Bench seating area

Please note that the kitchenette sink may not be fully accessible for all guests depending on individual mobility requirements.

The refrigerator is hinged on the left-hand side for easier access from the approach direction.

Dining and seating measurements:

- Dining table height: approximately 728mm
- Underside clearance: approximately 682mm
- Bench seating height: approximately 755mm
- Bench underside clearance: approximately 695mm

The hanging rail inside the wardrobe is approximately 1700mm from the floor.

### Queen and single bed layout



### Kitchenette area



---

### Bathroom & Shower Access

The bathroom is a combined shower and toilet area.

Access to the bathroom is via a sliding door with an opening width of approximately 800mm.

Bathroom dimensions:

- Length: approximately 2380mm
- Width: approximately 2017mm

Bathroom features include:

- Grab rail beside the toilet
- Grab rail within shower
- Adjustable shower seat
- Hand-held shower rose on flexible hose
- Step-free shower access

Toilet measurements:

- Toilet seat height: approximately 425mm
- Distance from wall to centre of toilet seat: approximately 460mm

A raised toilet seat is available upon request.

The shower includes:

- Fixed shower head
- Flexible shower hose mounted high on wall
- Adjustable shower chair

Please note that some guests may require assistance reaching the flexible shower hose depending on individual mobility requirements.

The hand basin projects forward from the vanity bench to improve accessibility underneath.

### Accessible bathroom



---

### Assistance & Guest Support

Our team is happy to assist guests with luggage where required.

Registered assistance dogs are welcome to stay with guests in the Accessible Queen Studio. Assistance dogs must be fully trained and appropriately registered.

No other pets are permitted.


Guests are encouraged to contact us directly prior to arrival if they would like to discuss accessibility requirements or specific room suitability.

We understand accessibility needs vary between guests, and we are always happy to discuss individual requirements prior to booking to help determine suitability.

---

### **Contact Us**

If you would like further information regarding accessibility at Lazy Lizard Motor Inn, please contact us directly and we will be happy to assist.

 +61 7 4099 5900

 [info@lazylizardinn.com.au](mailto:info@lazylizardinn.com.au)